



MONTHLY MEMBERSHIP PROGRESS REPORT

District 19 D

Results as of: 05/31/2018

GMT: GORDON ZIEGLER

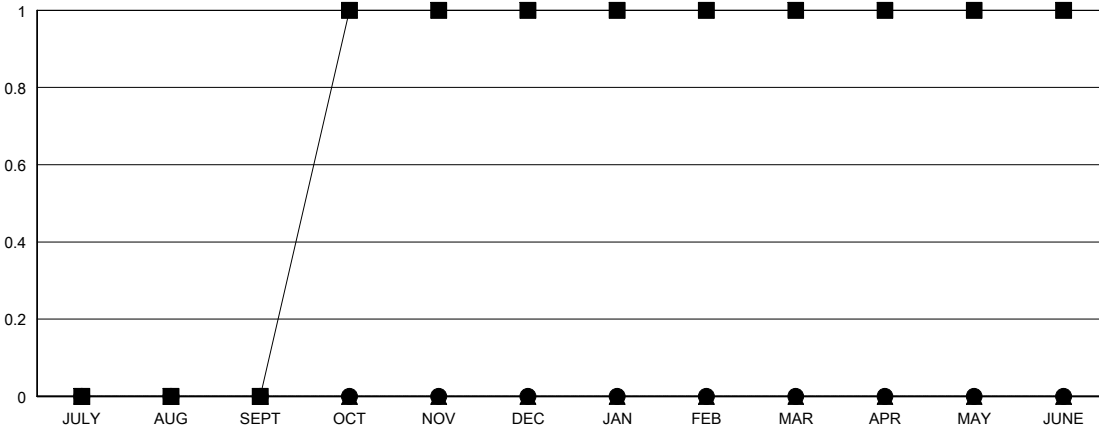
LOCATION WASHINGTON

GMT CA

Clubs			
RESULTS FOR 2017-2018			
QUARTER	NEW CLUB GOAL	NEW CLUBS	DROPPED CLUBS
JULY/AUG/SEPT	0	0	0
OCT/NOV/DEC	1	0	1
JAN/FEB/MAR	0	0	1
APR/MAY/JUNE	0	0	0

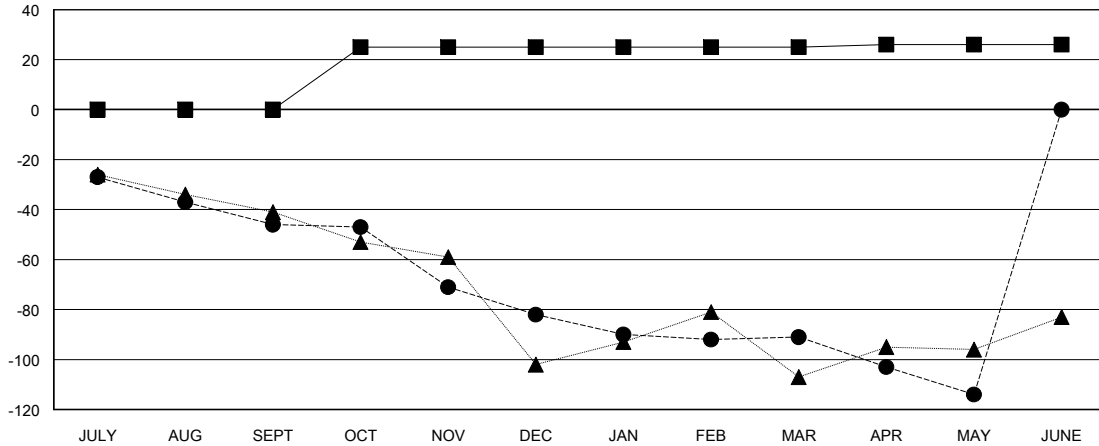
Members			
RESULTS FOR 2017-2018			
QUARTER	MEMBER GROWTH NET GOAL	MEMBER GROWTH ACTUAL	DROPPED MEMBERS ACTUAL (including transfers)
JULY/AUG/SEPT	0	20	61
OCT/NOV/DEC	25	34	65
JAN/FEB/MAR	0	42	45
APR/MAY/JUNE	1	15	35

GOALS AND ACTUAL NEW CLUBS CUMULATIVE



- - CURRENT YEAR GOALS FOR NEW CLUBS
- - CURRENT YEAR ACTUAL NEW CLUBS
- ▲ - LAST YEAR ACTUAL NEW CLUBS

GOALS AND ACTUAL MEMBERS CUMULATIVE



- - MEMBER GROWTH NET GOAL
- - MEMBER GROWTH ACTUAL
- ▲ - LAST YEAR MEMBERSHIP ACTUAL

DROPPED CLUBS: 2

31 CLUBS OF 50 ADDED 1 OR MORE NEW MEMBERS

GENDER DISTRIBUTION	
MALE	696 (56.68%)
FEMALE	532 (43.32%)
Women Percentage Fiscal Year Goal: 37%	

DROPPED MEMBERS	
DECEASED	27
CLUB CANCELLED	15
OTHER	164
TOTAL	206

[CLICK HERE FOR CUMULATIVE MEMBERSHIP DATA](#)

TOTAL FAMILY UNIT MEMBERS	296
FAMILY MEMBERS PAYING HALF DUES	150